



HARBOUR CRUISE

for 50 persons

BOAT CHARTER RATE *(For rental hours between 10am and 12midnight)*

4 Hours HKD 48,000 *(Monday - Sunday & PH)*

8 Hours **HKD 68,000** *(Monday - Thursday)* HKD 88,000 *(Friday - Sunday & PH)*

CAPACITY

50 maximum, excluding crew members

CREW

7, includes captain, stewardess & 2 bar staff

BOARDING & DISEMBARKATION PIER

Victoria Harbour Cruise

Central Pier 10 / Kwun Tong Public Pier

Southern Islands Cruise

Aberdeen Ocean Court / Aberdeen Marina Club (AMC members only)

NON-ALCOHOLIC BEVERAGES

Complimentary welcome drink *(1 glass per guest)*

Sprite, Sprite Plus, Coke, Coke Plus

Orange juice, Cranberry juice

Sparkling and distilled water, Nespresso, Tea

Bar nibbles, Glassware, 10kg edible ice *(6 packs)*

CORKAGE

Free corkage for a maximum of 12 wine or spirits

THIRD PARTY INSURANCE

FACILITIES

Lower Deck:

- 2 indoor multi-function rooms with AC
- Self-serving coffee corner
- Diving platform
- Outdoor and indoor showers
- 2 lavatories

Upper Deck:

- Al Fresco bar
- Outdoor dancing floor / performance stage
- Artificial grass lawn
- Glass ceiling

AMENITIES

Music player *(covers both deck)*

Portable microphone set

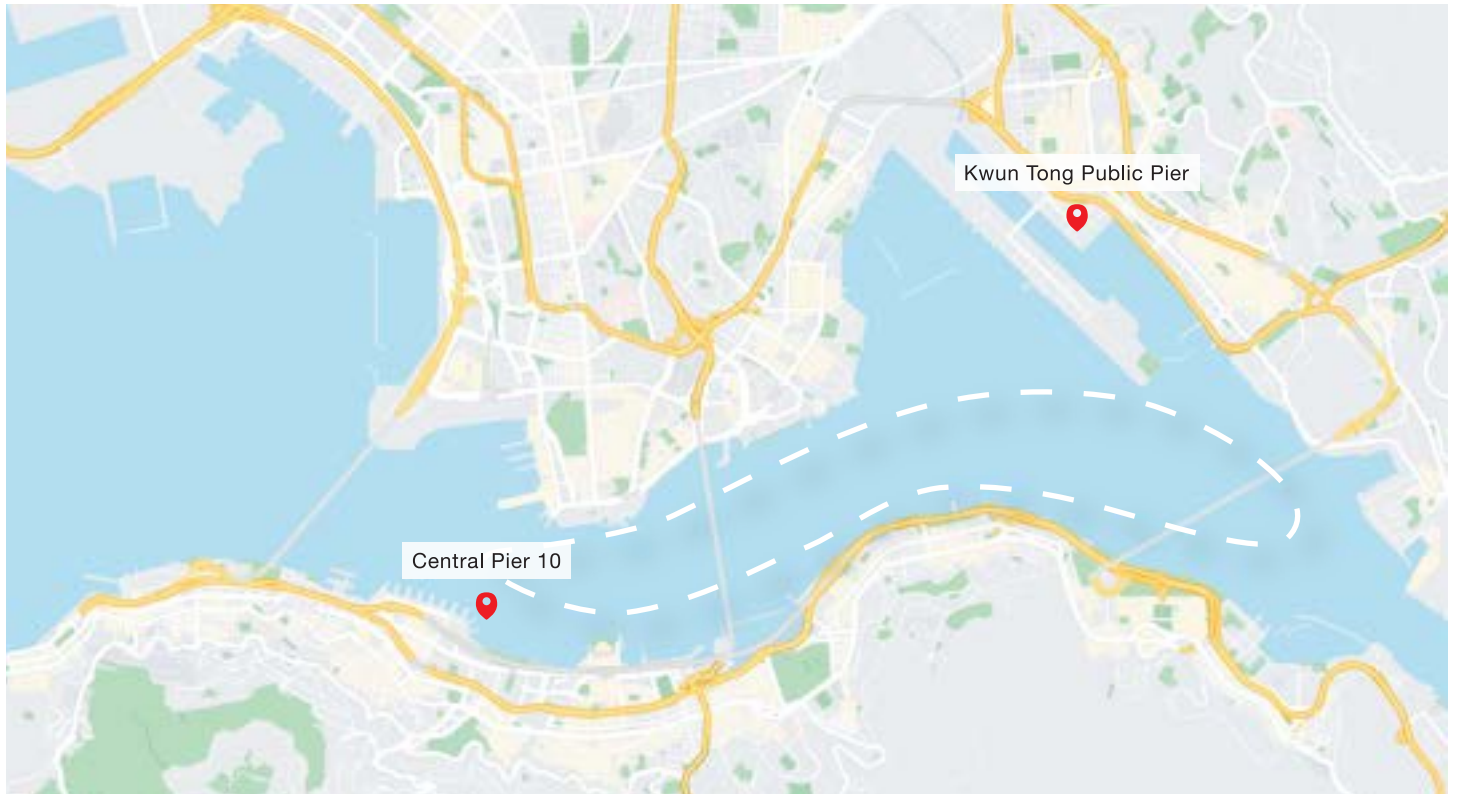
Portable screen & projector with HDMI cables

WIFI *(full boat coverage)*

Refrigerator and freezer

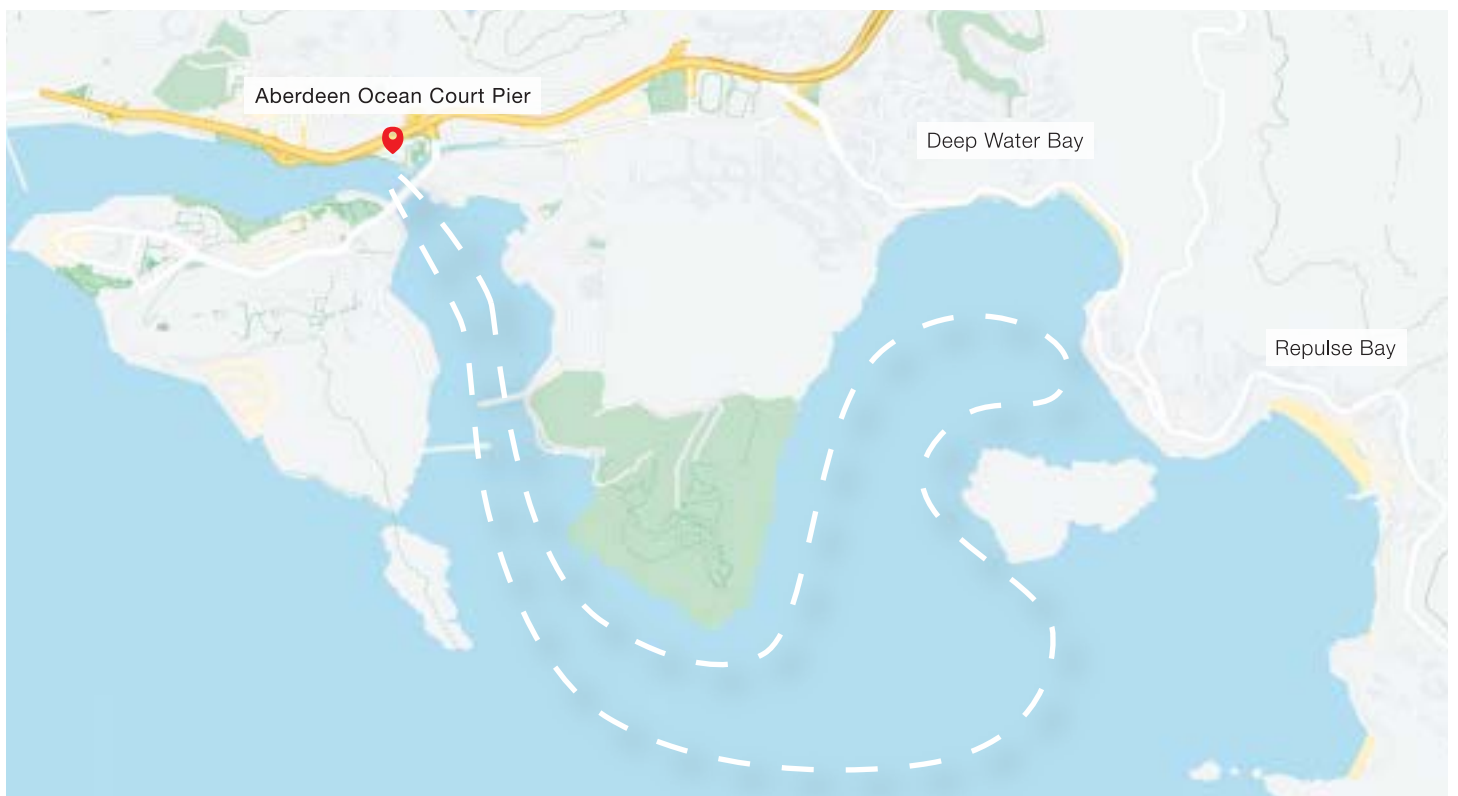
Cake stand & cake knife

CRUISING ROUTE



Victoria Harbour Cruise

Embark and Disembark at: Central Pier 10 or Kwun Tong Public Pier



Southern Island Cruise

Embark and Disembark at: Aberdeen Ocean Court Pier

Al-fresco Bar

(High table and low table sittings available)



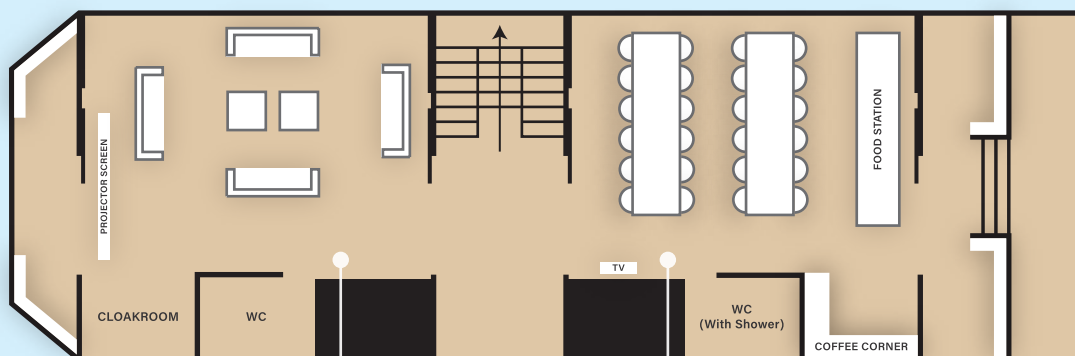
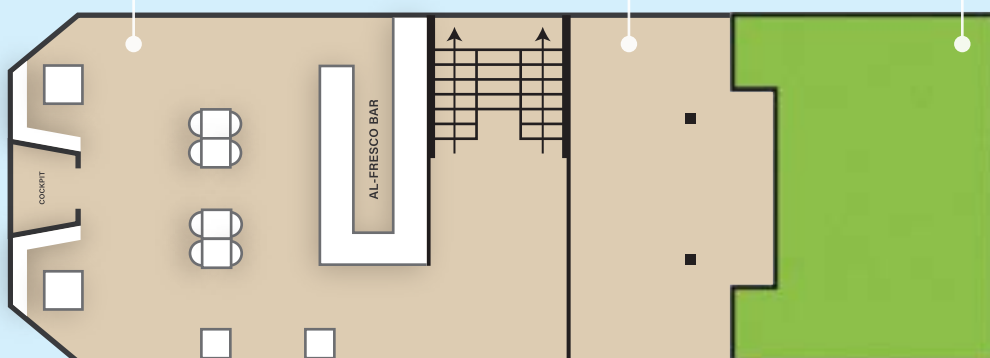
Stage / Dance Floor

(With electricity supply)



Grass Turf

(Can set sofas or individual seatings up to 50pax)



Front room: Lounge Setting

(Can change to dinning / meeting / presentation setting)



Back room: Dining Setting

(Can change to lounge / meeting setting)